

MAXIMIZE THE ACCURACY OF YOUR RESULTS WITH MINIMAL TIME AND EFFORT

Agilent Captiva Syringe Filters



Now more than ever, chromatographers are using filtration to help meet their unrelenting analytical demands and uncompromising expectations for quality, speed, and reproducibility.

For years, Agilent has understood that filtering samples prior to HPLC, UHPLC, and LC/MS analysis can improve both system performance and analytical quality—and this experience is reflected in our new line of Captiva syringe filters.

Performance begins here: Now you can improve accuracy without adding time to the chromatography process

Like all Agilent filtration products, Agilent Captiva syringe filters are developed by chromatographers *for* chromatographers. Their advantages include:

- **More choices:** Agilent Captiva filtration products are available in a wide range of sizes, formats, and membranes to cover every matrix and sample.
- **Certified cleanliness:** All Captiva Premium Syringe Filters are shipped with an HPLC or LC/MS Certificate that *guarantees* extremely low levels of observed extractables.
- **Top performance:** Every syringe filter is manufactured using the highest-grade housing and membrane materials for excellent flow, maximum sample loading capacity, and to ensure sample integrity.
- **Economical:** Our high-quality Econofilters are shipped in large packs, and are ideal for busy labs that need fast, efficient filtration at a reasonable price.

For optimal performance, column lifetime, and sample integrity, you can count on Agilent—the world chromatography leader—to help you improve your productivity.

Sample filtration prior to HPLC, UHPLC, and LC/MS analysis is critical to achieving optimal system performance.

Agilent Captiva syringe filters make the process faster than ever with the industry's highest flow rates and loading capacities.

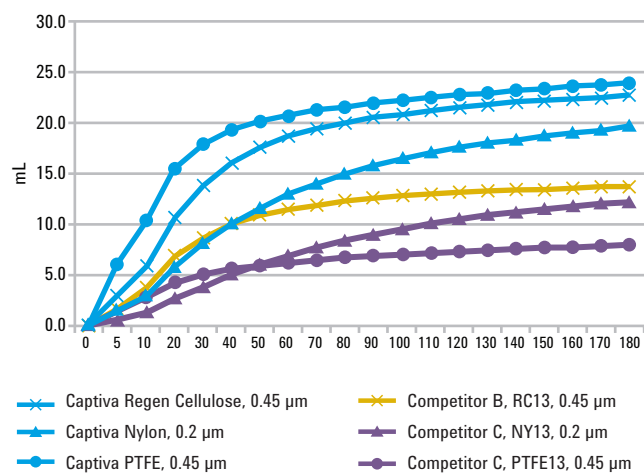


Proof that Agilent Captiva syringe filters can improve speed, resolution, and column life

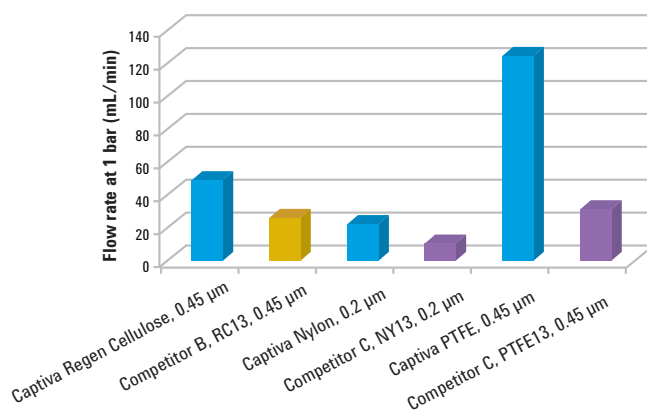
Still not filtering your samples? You should be. That's because even small amounts of injected particulates can cause problems such as inlet clogging, increased backpressure, retention time shift, resolution loss, and shorter column life. This is especially true for high-pressure sub-2 μm columns, which are more sensitive to pressure increases.

Captiva Premium Syringe Filters provide incomparable loading capacity with the fastest flow rates in the market today.

Capacity (volume) of 15 mm syringe filters over time with particulate-laden samples



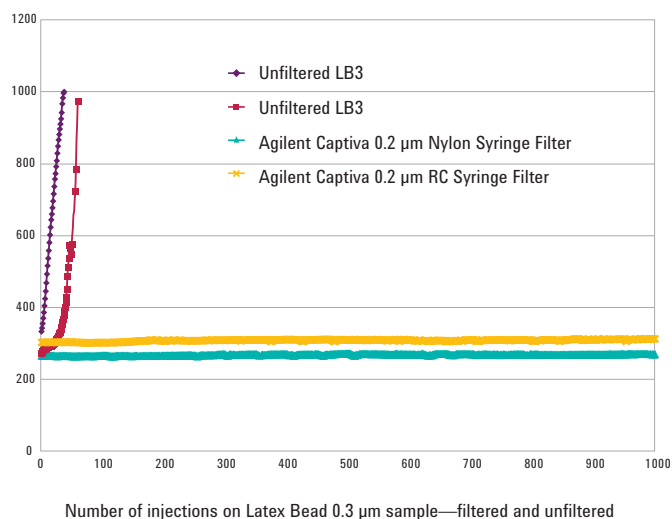
Flow rate for 15 mm Captiva Premium Syringe Filters



Maximum flow rate and volume capacity: As you can see above, Agilent Captiva syringe filters combine incomparable loading capacity with the industry's fastest flow rates to ensure maximum efficiency.

Sample filtration prior to HPLC analysis demonstrated significant improvement on column lifetime.

Filtration impact on sub-2 μm column A by Latex Bead
0.3 μm solution: Effects on filtration on sub-2 μm column life



No increase in backpressure: a 0.05% latex-sphere solution was filtered through Agilent Captiva syringe filters. Note that the column backpressure did not increase – even after 1000 injections. In addition, the clear effluents from the filters suggest a successful retention of latex spheres.



From sample prep to separation... Agilent keeps you in command of your analyses

Agilent CrossLab services, software, and supplies are designed to support every instrument brand in your lab.

Find out more at:

www.agilent.com/chem/crosslabsolutions

Money-saving Agilent Captiva Econofilters

Our high-quality Econofilters are shipped in large packs, and are ideal for busy labs that need fast, efficient filtration at a reasonable price.

Learn more:

www.agilent.com/chem/filtration

Agilent Captiva filtration products for every matrix and sample

- **Captiva Single Tube ND and Captiva ND Lipids** accept larger sample sizes than filter plates and syringe filters. Ideal for removing particulates, proteins, and lipids.
- **Captiva ND non-drip filter plates** deliver particulate-free, protein-precipitated samples five times faster than centrifugation.
- **Captiva ND Lipids non-drip filter plates** remove ion-suppressing lipids for lipid and protein depletion.
- **Captiva filter cartridges and plates** remove precipitated proteins and other particulates from your sample prior to LC/MS, using standard SPE cartridge and plate formats.

Agilent sample prep products keep your methods safe and minimize contamination

Agilent's complete line of sample preparation products provide essential filtration, purification and SPE cleanup to ensure less instrument contamination and more robust, reliable methods.

Combine robust sample preparation technology with Agilent's comprehensive selection of LC columns, to achieve superior method performance, including the sensitivity, accuracy, and reliability that demanding applications require.

Learn more:

www.agilent.com/chem/lccolumns

Ensuring peak performance and productivity with Agilent supplies

- Agilent offers an extensive portfolio of supplies for GC, LC, MS, and atomic and molecular spectroscopy.
- Agilent CrossLab features a range of GC and HPLC supplies for both Agilent and non-Agilent instruments.
- Maximize your lab's productivity and performance with A-Line LC fittings, Ultra Inert GC supplies, and other innovative technologies from Agilent.

For more information, visit:

www.agilent.com/chem/supplies



Our **Syringe Filter Online Selection Guide** makes it fast and easy to choose the best syringe filter for your application. Try it now at:

www.agilent.com/chem/selectfilters

Your time is precious... and so is your sample

High-quality Agilent Captiva syringe filters arrive ready to use—and are tested and certified to be free of UV-absorbing substances. So you can be confident that extractables or other contaminants will not damage the integrity of your samples.

Ordering Information:

Premium Filters, 100/pk

| Description | Diameter (mm) | Pore Size (µm) | Certification | Housing | Part No. |
|-----------------------|---------------|----------------|---------------|---------------|-----------|
| PTFE | 4 | 0.2 | LC | Polypropylene | 5190-5082 |
| | 4 | 0.45 | LC | Polypropylene | 5190-5083 |
| | 15 | 0.2 | LC | Polypropylene | 5190-5084 |
| | 15 | 0.45 | LC | Polypropylene | 5190-5085 |
| | 25 | 0.2 | LC | Polypropylene | 5190-5086 |
| | 25 | 0.45 | LC | Polypropylene | 5190-5087 |
| Nylon | 15 | 0.2 | LC | Polypropylene | 5190-5088 |
| | 15 | 0.45 | LC | Polypropylene | 5190-5091 |
| | 25 | 0.2 | LC | Polypropylene | 5190-5092 |
| | 25 | 0.45 | LC | Polypropylene | 5190-5093 |
| PES | 4 | 0.45 | LC/MS | Polypropylene | 5190-5095 |
| | 4 | 0.2 | LC/MS | Polypropylene | 5190-5094 |
| | 15 | 0.2 | LC/MS | Polypropylene | 5190-5096 |
| | 15 | 0.45 | LC | Polypropylene | 5190-5097 |
| | 25 | 0.2 | LC/MS | Polypropylene | 5190-5098 |
| | 25 | 0.45 | LC | Polypropylene | 5190-5099 |
| Regenerated cellulose | 4 | 0.2 | LC | Polypropylene | 5190-5106 |
| | 4 | 0.45 | LC | Polypropylene | 5190-5107 |
| | 15 | 0.2 | LC | Polypropylene | 5190-5108 |
| | 15 | 0.45 | LC | Polypropylene | 5190-5109 |
| | 25 | 0.2 | LC | Polypropylene | 5190-5110 |
| | 25 | 0.45 | LC | Polypropylene | 5190-5111 |
| Cellulose acetate | 28 | 0.2 | LC | MBS | 5190-5116 |
| | 28 | 0.45 | LC | MBS | 5190-5117 |
| Glass microfiber | 15 | n/a | LC/MS | Polypropylene | 5190-5120 |
| | 28 | n/a | LC | MBS | 5190-5122 |

Layered Filters, 100/pk

| Description | Diameter (mm) | Pore Size (µm) | Certification | Housing | Part No. |
|------------------------|---------------|----------------|---------------|---------------|-----------|
| Glass microfiber/PTFE | 15 | 0.2 | LC | Polypropylene | 5190-5126 |
| | 15 | 0.45 | LC | Polypropylene | 5190-5127 |
| | 25 | 0.2 | LC | Polypropylene | 5190-5128 |
| | 25 | 0.45 | LC | Polypropylene | 5190-5129 |
| Glass microfiber/Nylon | 15 | 0.2 | LC | Polypropylene | 5190-5132 |
| | 15 | 0.45 | LC | Polypropylene | 5190-5133 |
| Nylon | 25 | 0.2 | LC | Polypropylene | 5190-5134 |
| | 25 | 0.45 | LC | Polypropylene | 5190-5135 |

Agilent Products are for Research Use Only.
Not for use in diagnostic procedures.
Information, descriptions and specifications in this publication are subject to change without notice.

© Agilent Technologies, Inc. 2016
Published in USA, March 14, 2016
5991-1278EN

Captiva Disposable Syringes, 100/pk

| Volume | Part No. |
|--------|-----------|
| 5 mL | 9301-6476 |
| 10 mL | 9301-6474 |
| 20 mL | 5190-5103 |

Econofilters, 1000/pk

| Description | Diameter (mm) | Pore Size (µm) | Housing | Part No. |
|---------------------------------------|---------------|----------------|---------------|-----------|
| PVDF | 13 | 0.2 | Polypropylene | 5190-5261 |
| | 13 | 0.45 | Polypropylene | 5190-5262 |
| | 25 | 0.2 | Polypropylene | 5190-5263 |
| | 25 | 0.45 | Polypropylene | 5190-5264 |
| PTFE | 13 | 0.2 | Polypropylene | 5190-5265 |
| | 13 | 0.45 | Polypropylene | 5190-5266 |
| | 25 | 0.2 | Polypropylene | 5190-5267 |
| | 25 | 0.45 | Polypropylene | 5190-5268 |
| Nylon | 13 | 0.2 | Polypropylene | 5190-5269 |
| | 13 | 0.45 | Polypropylene | 5190-5270 |
| | 25 | 0.2 | Polypropylene | 5190-5271 |
| | 25 | 0.45 | Polypropylene | 5190-5272 |
| PES | 13 | 0.2 | Polypropylene | 5190-5273 |
| | 13 | 0.45 | Polypropylene | 5190-5274 |
| | 25 | 0.2 | Polypropylene | 5190-5275 |
| | 25 | 0.45 | Polypropylene | 5190-5276 |
| Polypropylene | 13 | 0.2 | Polypropylene | 5190-5277 |
| | 13 | 0.45 | Polypropylene | 5190-5278 |
| | 25 | 0.2 | Polypropylene | 5190-5279 |
| | 25 | 0.45 | Polypropylene | 5190-5280 |
| Regenerated Cellulose (Premium Grade) | 15 | 0.2 | Polypropylene | 5190-5310 |
| | 15 | 0.45 | Polypropylene | 5190-5308 |
| | 25 | 0.2 | Polypropylene | 5190-5309 |
| | 25 | 0.45 | Polypropylene | 5190-5307 |



Agilent Technologies

To learn more about Agilent Captiva filtration products, or to buy now, go to:
www.agilent.com/chem/filtration

You can also contact your local Agilent representative or Agilent authorized distributor at:
www.agilent.com/chem/contactus



Neta Scientific
LAB SUPPLIES AND SOLUTIONS

4206 Sylon Blvd, Hainesport, NJ 08036
(800) 343-6015 | orders@netascientific.com
www.netascientific.com